

让中国装备技术与世界同步
WE WALK ALONGSIDE THE WORLD

股票代码:300415

YIZUMI伊之密

CMS

CMS压铸机状态监控系统
DCM Condition Monitor System

App下载



PC端体验-网址: <https://iiot.yizumi.com>

广东伊之密精密机械股份有限公司
GUANGDONG YIZUMI PRECISION MACHINERY CO., LTD.

地址:广东省佛山市顺德高新区(容桂)科苑三路22号 TEL:86-757-2926 5301 FAX:86-757-2926 5300 www.yizumi.com



模压成型装备IIOT平台

平台定位

面向**金属压铸成型**行业, 聚焦生产管理环节。

应用物联网、云计算、大数据、人工智能等技术, 解决设备监控、故障诊断和预测性维护、工艺参数追溯和优化等痛点问题, 实现生产效率和制品品质提升。

Molding Equipment IIOT Platform

Platform Positioning

For the metal die-casting industry, focus on production management.

The platform applies technologies such as Internet of Things, cloud computing, big data and AI in a bid to resolve the issues of equipment monitoring, troubleshooting, predictive maintenance, process parameter traceability and optimization, improving production efficiency and product quality.

六大优势 Six Advantages



快速部署 Fast Deployment

硬件即插即用, 无线网络连接, 服务云端部署, 功能按需选配, 零固定资产投入

Plug and play, wireless network connection, cloud serving system, on-demand optional functions, zero fixed asset investment.



安全稳定 SECURITY

为用户提供所有权、管理权、变更权、选择权, 金融级芯片加密, 保证数据安全

Encrypt Cold Data, Open API authorized OAUTH 2.0 and Https.



功能丰富 Rich Functions

远程监控、故障报警、维保管理、参数监控、数据统计等功能, 提升设备利用率&制品良率

Remote condition monitoring, alarm, maintenance remind, data statistics, and other functions that can help improving the OEE.



开放易用 Extensibility and openness

丰富的API接口, 方便接入客户ERP、MES等第三方系统, 智能手机操作简单易用

The API interfaces allow the customers to connect with the third-party system e.g. ERP, MES, etc. conveniently. Smart phone access, easy to use.



技术领先 Advanced Technologies

采用云计算、边缘计算、工业互联网等先进技术, 实现系统高可用、高可靠

Adopting advanced technologies such as cloud computing, edge computing, and industrial Internet to achieve high availability and high reliability



智能服务 Intelligent Services

设备故障一键报修, 实时监控维修进度, 减少设备停机影响

One-key repair of equipment failure, real-time monitoring of maintenance progress, reducing the impact of equipment downtime.

模压成型装备IIOT平台 Molding Equipment IIOT Platform

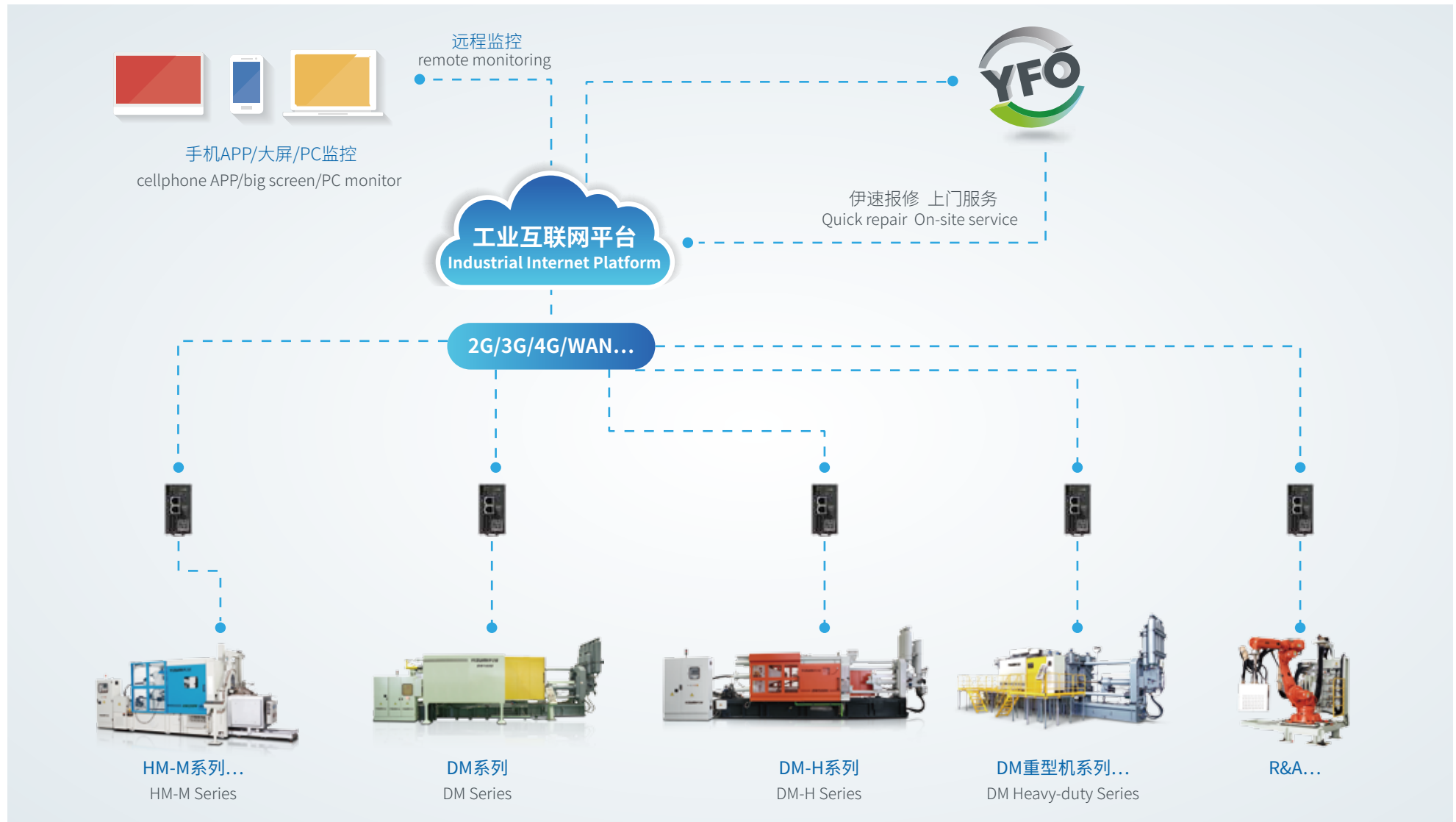
平台架构 Platform Structure

基于物联网、云计算技术的微服务架构, 客户现场免部署, 即插即用、按需租用, 系统功能同步升级
Based on the micro-service structure of the Internet of Things and cloud computing technology, customer site is free of deployment, plug and play, on-demand optional functions, system function synchronization upgrade

① 硬件安装
Hardware installation

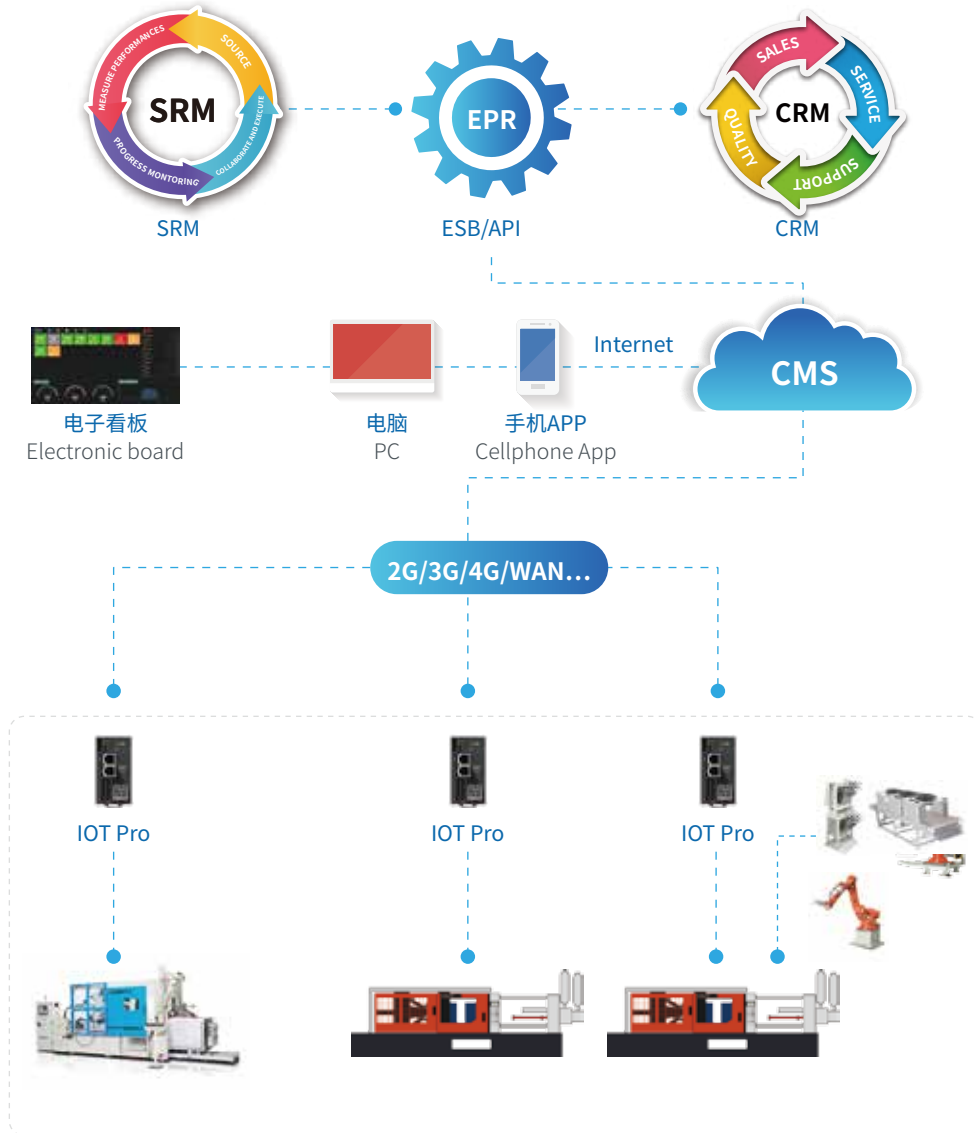
② 后台配置
Backend configuration

③ 客户使用
Customer use



CMS状态监控系统

CMS系统 (Condition Monitor System), 依托工业互联网平台, 基于微服务技术而研发的新一代信息管理系统。用户可以通过手机App和PC等终端, 实时查看设备状态、工艺参数、报警信息等, 并统计分析OEE、产量等信息, 大幅降低客户实现智能生产的技术门槛、建置和运营成本。



Condition Monitor System

The Condition Monitor System (CMS) is a new generation of information management system based on microservice technology on the Yizumi Industrial Internet Platform. The users can view the real-time status, process parameters, equipment alarm, OEE, output and other information of the equipment via terminals such as mobile apps and computers, significantly reducing the technical threshold, construction and operational costs for customers to achieve intelligent production.

基础功能 Basic functions

工厂建模, 组织架构, 权限管理, 数据采集...
Factory modeling, organizational structure, authority management, data collection...

车间监控 Workshop monitoring

生产监控, 设备监控, 生产统计, 效率统计, 报警信息...
Production monitoring, equipment monitoring, production statistics, efficiency statistics, alarm information..

维保管理 Maintenance management

维保计划, 维保执行, 维保预警...
Maintenance plan, maintenance implementation, maintenance warning...

故障管理 Fault management

停机告警, 维修履历, 停机分析, 专家系统...
Shutdown alarm, maintenance history, shutdown analysis, experts system...

工艺监控 Process monitoring

参数监控, 异常告警, 变更追溯, 参数备份, 参数追溯...
Parameter monitoring, abnormal alarm, change traceability, parameter backup, parameter traceability...

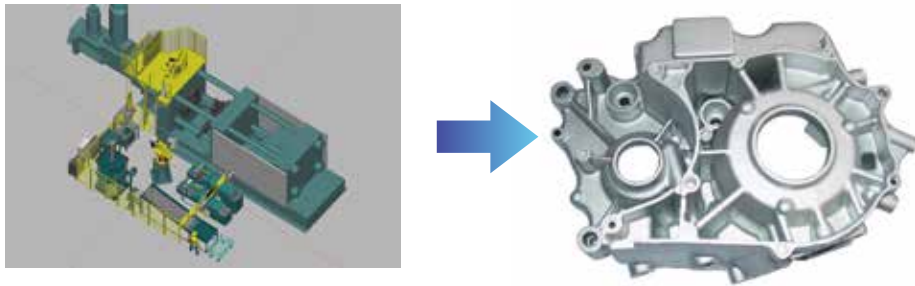
e-service 24

一键报修, 过程可视, 服务评价...
Quick repair, process visualization, service evaluation...

CMS状态监控系统 Condition Monitor System

生产监控——生产状态一目了然

Production monitoring - production status at a glance



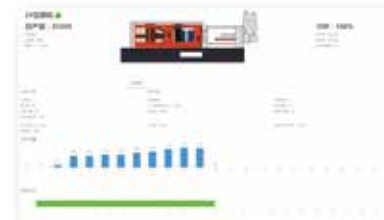
▶ 设备监控 Equipment monitoring

- 运行状态实时可视
- 运营指标动态计算
- 报警信息实时采集
- 异常停机及时预警
- Real-time visibility of operating status
- Dynamic calculation of operational indicators
- Real-time collection of alarm information
- Timely warning of abnormal shutdown



▶ 工艺监控 Process monitoring

- 工艺参数实时采集
- 参数异常及时预警
- 历史加工参数追溯
- 工艺参数SPC控制
- Process parameter real-time acquisition
- Abnormal parameter warning
- Historical processing parameters
- Process parameter SPC control



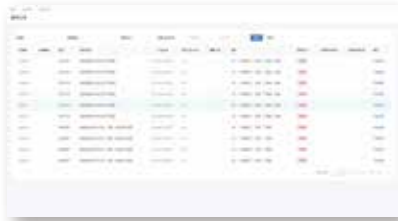
▶ 生产统计 Production statistics

- 生产进度监控
- 质量统计分析
- 小时产量统计
- KPI异常预警
- Production progress monitoring
- Quality statistical analysis
- Hourly output statistics
- KPI abnormal warning

CMS状态监控系统 Condition Monitor System

生产监控——生产状态一目了然

Production monitoring - production status at a glance



▶ 设备预测性维护

Predictive maintenance of equipment

- 维保计划自动生成
- 维保执行事先预警
- 维保工单及时推送
- Maintenance plan automatically generated
- Prior warning of maintenance
- Maintenance work orders pushed in time



移动终端——车间生产随处可视

Mobile terminal - workshop production can be seen anywhere

